



Excellence in Web Performance™



Apica *WebPerformance*TM for EPiServer

Dear EPiServer partner,

As a result of Apica's cooperation with EPiServer you will now be able to monitor the performance of your web site(s).

You will be able to keep track of such data as uptime, average and median response time, SLA statistics and much more.

This document will guide you through all the steps of installing and using the **Apica** *WebPerformance*TM service.

We are happy that you have chosen to become one of our partners in aiming for "Excellence in Web Performance"

Good luck !
The Apica team

Table of contents

1. Get started in three easy steps
2. Two access alternatives
3. Get started - Direct
4. Get started - Plugin
5. Downloading and installing the plugin
6. Registering your account

Two ways to access the service

There are two ways of getting access to the service:

1. Direct – Go directly to the web service dedicated to EPiServer partners
 - Registration <http://epiwcs.mywebcheck.com>
 - Access <http://apm.mywebcheck.com>
2. Plugin – Download and install the Apica EPiMore plugin that gives you access via the EPiServer admin interface.
 - Internal via Edit mode
 - External web via <http://apm.mywebcheck.com>

*Excellence in Web Performance*TM

Apica | Industrivägen 7, 4 tr | 171 48 Solna | Sweden | Phone: +46 (0)8 558 036 30
www.apicasystem.com | sales@apicasystem.com | Orgnr: 556676-4121



Get started – Direct

If you just want to get started quickly and easily – this should be your choice. You'll get access to all your performance data via a standalone web service.

1. Go to <http://epi.apicasystem.com> and click the link to register.
2. You'll be guided through a few easy steps helping you to set up your account.
3. When you're done – Bookmark the page, remember your login and start monitoring your web performance.
4. Boomark <http://apm.mywebcheck.com>

Use this option if you don't have administration rights to your EPiServer installation.

Get started - Plugin

Slightly more advanced, this option gives you access to **Apica WebPerformance™** every time you login to the EPiServer admin interface. There will be no need for a separate login.

Please note that you'll need administration rights to your EPiServer installation in order to set up the plugin.

You will be able to get started in three easy steps:

1. Download the Apica plugin
2. Install the plugin on your EPiServer platform
3. Click "Register"* in the new Apica WebPerformance tab that now appears in the left hand menu (in Edit mode).

*Please note that you need to setup IE to accept epiwc.apicasystem.com as trusted URL before Registration as trusted URL or use Firefox

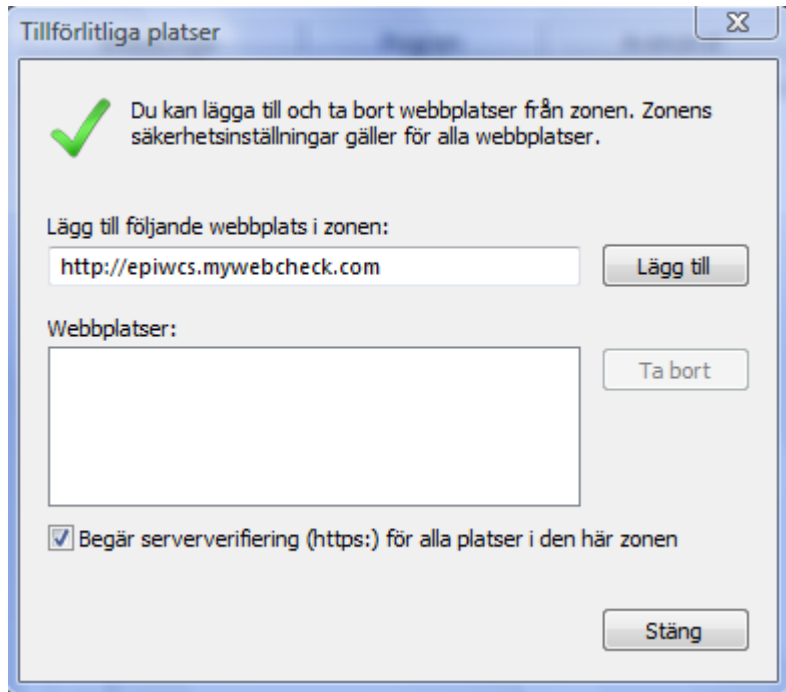
- Before proceeding with Register , from an IE browser you need to add <http://epiwc.apicasystem.com> as reliable network . If you have a Firefox this will not be a problem

Excellence in Web Performance™

Apica | Industrivägen 7, 4 tr | 171 48 Solna | Sweden | Phone: +46 (0)8 558 036 30
www.apicasystem.com | sales@apicasystem.com | Orgnr: 556676-4121

Copyright 2009 Apica System

Page 3



Downloading and installing the plugin

1. Go to the page <http://epi.apicasystem.com> where you will find the link to download the plugin.
2. Download it to your computer.

Prerequisites

EPiServer and EPiServer manager needs to be installed on the computer hosting the EPiServer site. Please see EPiServer documentation for more information.

Excellence in Web Performance™

Apica | Industrivägen 7, 4 tr | 171 48 Solna | Sweden | Phone: +46 (0)8 558 036 30
www.apicasystem.com | sales@apicasystem.com | Orgnr: 556676-4121

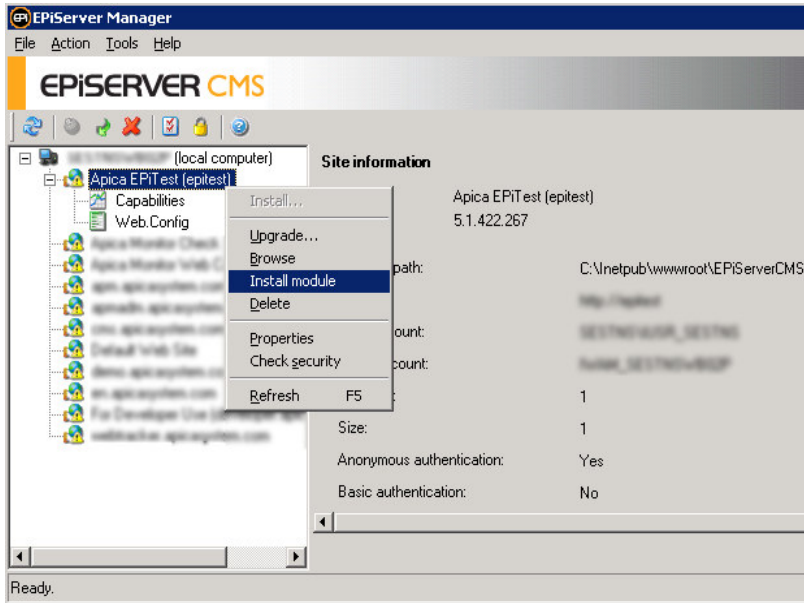
Copyright 2009 Apica System

Page 4



Steps to install the module using EPiServer Manager

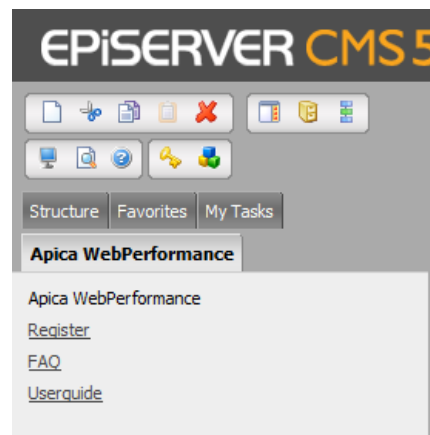
1. Start EPiServer CMS manager
2. Choose the target EPiServer website and rightclick “Install Module”



3. You should see the “Module Installation” screen. Click the “Next” button.
4. Click “Browse” and point to the plugin downloaded at <http://epi.apicasystem.com>. Make sure “Overwrite existing files” is checked, and then click the “Next” button.
5. The package should install when you click Finish.

No further steps are required.

To verify the installation please start up the website in *Edit* mode and you should see a new *Tab* called “Apica Webperformance”.



Excellence in Web Performance™

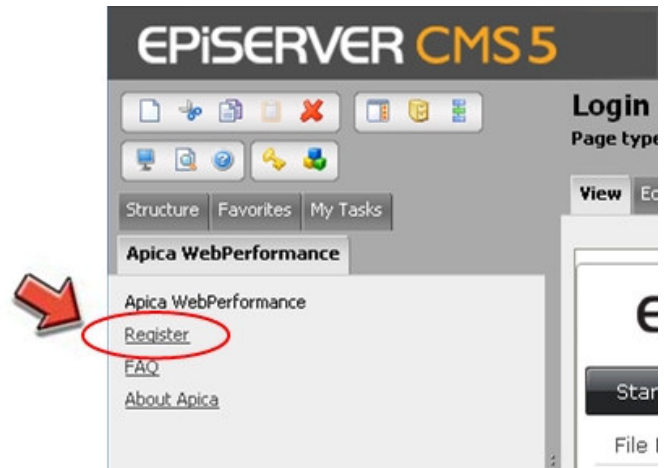
Apica | Industrivägen 7, 4 tr | 171 48 Solna | Sweden | Phone: +46 (0)8 558 036 30
www.apicasystem.com | sales@apicasystem.com | Orgnr: 556676-4121

Copyright 2009 Apica System

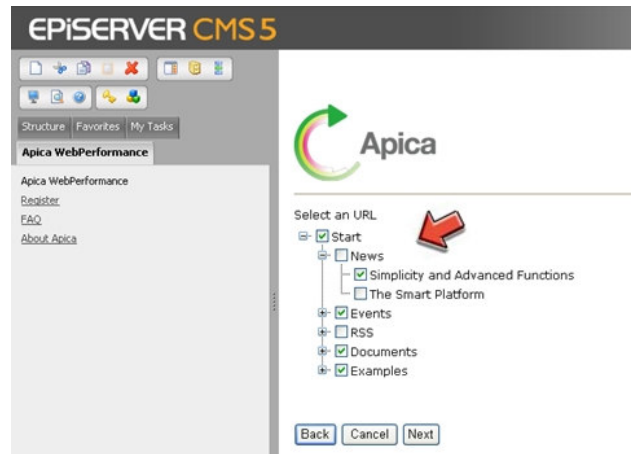


Registering your account in the Plugin

1. When you login to the EPiServer admin interface **select the “Edit” mode**
2. You will now see a new Apica WebPerformance tab appear in the left hand menu
3. **Click “Register”** to start the registration and setup process.
4. On the next page – **Fill out the registration form**. You only have to fill in the mandatory fields, but we’ll be able to give you better customer service if you fill out all the fields.



5. In the next step you will see your entire web with all it’s pages.
Select up to 5 URLs for monitoring by checking the appropriate boxes



6. The following page is “URL verification”:
On this page the URL(s) you have selected are verified (meaning that they are reachable and can be monitored)
Enter a name for each of your checks.
7. Registration complete . It will take a few minutes before the values appear in the GUI
8. Note : Remember to update the reports tab (under Admin) with your scheduled SLA reports by email or just saved in the directory

Excellence in Web Performance™

Apica | Industrivägen 7, 4 tr | 171 48 Solna | Sweden | Phone: +46 (0)8 558 036 30
www.apicasystem.com | sales@apicasystem.com | Orgnr: 556676-4121